



AssayMax™
Human Calprotectin ELISA Kit

Assaypro LLC
3400 Harry S Truman Blvd
St. Charles, MO 63301
T (636) 447-9175
F (636) 395-7419
www.assaypro.com

For any questions regarding troubleshooting or performing the assay, please contact our support team at support@assaypro.com.

Thank you for choosing Assaypro.

Assay Summary

Step 1. Add 50 μ l of Standard or Sample per well.
Incubate 2 hours.

Step 2. Wash, then add 50 μ l of Biotinylated Antibody per well.
Incubate 1 hour.

Step 3. Wash, then add 50 μ l of SP Conjugate per well.
Incubate 30 minutes.

Step 4. Wash, then add 50 μ l of Chromogen Substrate per well.
Incubate 30 minutes.

Step 5. Add 50 μ l of Stop Solution per well.
Read at 450 nm immediately.

Symbol Key



Consult instructions for use.

AssayMax™ Human Calprotectin ELISA Kit

Catalog No. EC3103-1

Sample insert for reference use only

Introduction

Calprotectin, a heterodimeric complex of S100-A8/A9, is a member of the S100 family of EF-hand calcium-binding proteins with more than 20 members. Calprotectin consists of two 14 kDa amino acid chains (MRP14, S100-A9) and one 8 kDa amino acid chain (MRP8, S100-A8). It is localized in the cytoplasm and nucleus of a wide range of cells and involved in the regulation of cell cycle progression and differentiation. Calprotectin, a danger associated molecular pattern molecule, is released by activated phagocytes and has been shown as a critical proinflammatory mediator in chronic and acute inflammatory processes (1-2).

Principle of the Assay

The AssayMax™ Human Calprotectin ELISA (Enzyme-Linked Immunosorbent Assay) Kit is designed for detection of calprotectin in human **plasma, serum, milk, urine, saliva, CSF, cell culture, cell lysate, and tissue samples**. This assay employs a quantitative **sandwich enzyme immunoassay** technique that measures human calprotectin in approximately 4 hours. A polyclonal antibody specific for human calprotectin has been pre-coated onto a 96-well microplate with removable strips. Calprotectin in standards and samples is sandwiched by the immobilized antibody and a biotinylated polyclonal antibody specific for human calprotectin, which is recognized by a streptavidin-peroxidase (SP) conjugate. All unbound material is washed away and a peroxidase enzyme substrate is added. The color development is stopped and the intensity of the color is measured.

Caution and Warning

- This product is for **Research Use Only** and is not intended for use in diagnostic procedures.
- Prepare all reagents (diluent buffer, wash buffer, standard, biotinylated antibody, and SP conjugate), as instructed, prior to running the assay.
- Prepare all samples prior to running the assay. The dilution factors for the samples are suggested in this insert. However, the user should determine the optimal dilution factor.
- Spin down the SP conjugate vial and the biotinylated antibody vial before opening and using contents.

- The Stop Solution is an acidic solution.
- The kit should not be used beyond the expiration date.

Reagents

- **Human Calprotectin Microplate:** A 96-well polystyrene microplate (12 strips of 8 wells) coated with a polyclonal antibody against human calprotectin.
- **Sealing Tapes:** Each kit contains 3 precut, pressure sensitive sealing tapes that can be cut to fit the format of the individual assay.
- **Human Calprotectin Standard:** Human calprotectin in a buffered protein base (9 ng, lyophilized).
- **Biotinylated Human Calprotectin Antibody (25x):** A 25-fold concentrated biotinylated polyclonal antibody against human calprotectin (200 μ l).
- **MIX Diluent Concentrate (10x):** A 10-fold concentrated buffered protein base (30 ml).
- **Wash Buffer Concentrate (20x):** A 20-fold concentrated buffered surfactant (30 ml, 2 bottles).
- **SP Conjugate (100x):** A 100-fold concentrate (80 μ l).
- **Chromogen Substrate (1x):** A stabilized peroxidase chromogen substrate tetramethylbenzidine (7 ml).
- **Stop Solution (1x):** A 0.5 N hydrochloric acid solution to stop the chromogen substrate reaction (11 ml).

Storage Condition

- Upon arrival, immediately store components of the kit at recommended temperatures up to the expiration date.
- Store SP Conjugate and Biotinylated Antibody at -20°C.
- Store Microplate, Diluent Concentrate (10x), Wash Buffer, Stop Solution, and Chromogen Substrate at 2-8°C.
- Unused microplate wells may be returned to the foil pouch with the desiccant packs and resealed. May be stored for up to 30 days in a vacuum desiccator.
- Store Standard at 2-8°C before reconstituting with Diluent and at -20°C after reconstituting with Diluent.

Other Supplies Required

- Microplate reader capable of measuring absorbance at 450 nm
- Pipettes (1-20 μ l, 20-200 μ l, 200-1000 μ l, and multiple channel)
- Deionized or distilled reagent grade water

Sample Collection, Preparation, and Storage

- **Plasma:** Collect plasma using one-tenth volume of 0.1 M sodium citrate as an anticoagulant. Centrifuge samples at 3000 x *g* for 10 minutes and collect plasma. A 2000-fold sample dilution is suggested into MIX Diluent; however, user should determine optimal dilution factor depending on application needs. The undiluted samples can be stored at -20°C or below for up to 3 months. Avoid repeated freeze-thaw cycles (EDTA or Heparin can also be used as an anticoagulant).
- **Serum:** Samples should be collected into a serum separator tube. After clot formation, centrifuge samples at 3000 x *g* for 10 minutes and remove serum. A 2000-fold sample dilution is suggested into MIX Diluent; however, user should determine optimal dilution factor depending on application needs. The undiluted samples can be stored at -20°C or below for up to 3 months. Avoid repeated freeze-thaw cycles.
- **Milk:** Collect milk using sample tube. Centrifuge samples at 800 x *g* for 10 minutes. An 80000-fold sample dilution is suggested into MIX Diluent or within the range of 50000x – 250000x; however, user should determine optimal dilution factor depending on application needs. The undiluted samples can be stored at -20°C or below for up to 3 months. Avoid repeated freeze-thaw cycles.
- **Urine:** Collect urine using sample pot. Centrifuge samples at 800 x *g* for 10 minutes. A 200-fold sample dilution is suggested into MIX Diluent or within the range of 20x – 2000x; however, user should determine optimal dilution factor depending on application needs. The undiluted samples can be stored at -20°C or below for up to 3 months. Avoid repeated freeze-thaw cycles.
- **Saliva:** Collect saliva using sample tube. Centrifuge samples at 800 x *g* for 10 minutes. A 10000-fold sample dilution is suggested into MIX Diluent or within the range of 1000x – 100000x; however, user should determine optimal dilution factor depending on application needs. The undiluted samples can be stored at -20°C or below for up to 3 months. Avoid repeated freeze-thaw cycles.
- **CSF:** Collect cerebrospinal fluid (CSF) using sample pot. Centrifuge samples at 3000 x *g* for 10 minutes. A 200-fold sample dilution is suggested into MIX Diluent or within the range of 20x – 2000x; however, user should determine optimal dilution factor depending on application needs. The undiluted samples can be stored at -80°C for up to 3 months. Avoid repeated freeze-thaw cycles.
- **Cell Culture Supernatant:** Centrifuge cell culture media at 1500 rpm for 10 minutes at 4°C to remove debris and collect supernatant. If necessary, dilute samples into MIX Diluent; user should determine optimal dilution factor depending on application needs. The undiluted samples can be stored at -80°C. Avoid repeated freeze-thaw cycles.

- **Cell Lysate:** Rinse cell with cold PBS and then scrape the cell into a tube with 5 ml of cold PBS and 0.5 M EDTA. Centrifuge suspension at 1500 rpm for 10 minutes at 4°C and aspirate supernatant. Resuspend pellet in ice-cold Lysis Buffer (PBS, 1% Triton X-100, protease inhibitor cocktail). For every 1×10^6 cells, add approximately 100 μ l of ice-cold Lysis Buffer. Incubate on ice for 60 minutes. Centrifuge at 13000 rpm for 30 minutes at 4°C and collect supernatant. If necessary, dilute samples into MIX Diluent; user should determine optimal dilution factor depending on application needs. The undiluted samples can be stored at -80°C. Avoid repeated freeze-thaw cycles.
- **Tissue:** Extract tissue samples with 0.1 M phosphate-buffered saline (pH 7.4) containing 1% Triton X-100 and centrifuge at 14000 \times g for 20 minutes. Collect the supernatant and measure the protein concentration. If necessary, dilute samples into MIX Diluent; user should determine optimal dilution factor depending on application needs. Store remaining extract at -80°C. Avoid repeated freeze-thaw cycles.

Applicable samples may also include biofluids, cell culture, and tissue homogenates. If necessary, user should determine optimal dilution factor depending on application needs.

Refer to Dilution Guidelines for further instruction.

Guidelines for Dilutions of 100-fold or Greater <i>(for reference only; please follow the insert for specific dilution suggested)</i>	
100x	10000x
A) 4 μ l sample : 396 μ l buffer (100x) = 100-fold dilution <i>Assuming the needed volume is less than or equal to 400 μl.</i>	A) 4 μ l sample : 396 μ l buffer (100x) B) 4 μ l of A : 396 μ l buffer (100x) = 10000-fold dilution <i>Assuming the needed volume is less than or equal to 400 μl.</i>
1000x	100000x
A) 4 μ l sample : 396 μ l buffer (100x) B) 24 μ l of A : 216 μ l buffer (10x) = 1000-fold dilution <i>Assuming the needed volume is less than or equal to 240 μl.</i>	A) 4 μ l sample : 396 μ l buffer (100x) B) 4 μ l of A : 396 μ l buffer (100x) C) 24 μ l of B : 216 μ l buffer (10x) = 100000-fold dilution <i>Assuming the needed volume is less than or equal to 240 μl.</i>

Reagent Preparation

- Freshly dilute all reagents and bring all reagents to room temperature before use.
- **MIX Diluent Concentrate (10x):** Dilute the MIX Diluent Concentrate 10-fold with reagent grade water to produce a 1x solution. When diluting

the concentrate, make sure to rinse the bottle thoroughly to extract any precipitates left in the bottle. Mix the 1x solution gently until the crystals have completely dissolved. Store for up to 30 days at 2-8°C.

- Human Calprotectin Standard:** Reconstitute the Human Calprotectin Standard (9 ng) with 1.8 ml of MIX Diluent to generate a 5 ng/ml standard stock solution. Allow the vial to sit for 10 minutes with gentle agitation prior to making dilutions. Prepare duplicate or triplicate standard points by serially diluting from the standard stock solution (5 ng/ml) 2-fold with equal volume of MIX Diluent to produce 2.5, 1.25, 0.625, 0.313, 0.156, and 0.078 ng/ml solutions. MIX Diluent serves as the zero standard (0 ng/ml). Any remaining stock solution should be stored at -20°C and used within 30 days. Avoid repeated freeze-thaw cycles.

Standard Point	Dilution	[Calprotectin] (ng/ml)
P1	1 part Standard (5 ng/ml)	5.0
P2	1 part P1 + 1 part MIX Diluent	2.5
P3	1 part P2 + 1 part MIX Diluent	1.25
P4	1 part P3 + 1 part MIX Diluent	0.625
P5	1 part P4 + 1 part MIX Diluent	0.313
P6	1 part P5 + 1 part MIX Diluent	0.156
P7	1 part P6 + 1 part MIX Diluent	0.078
P8	MIX Diluent	0.0

- Biotinylated Human Calprotectin Antibody (25x):** Spin down the antibody briefly and dilute the desired amount of the antibody 25-fold with MIX Diluent to produce a 1x solution. The undiluted antibody should be stored at -20°C.
- Wash Buffer Concentrate (20x):** Dilute the Wash Buffer Concentrate 20-fold with reagent grade water to produce a 1x solution. When diluting the concentrate, make sure to rinse the bottle thoroughly to extract any precipitates left in the bottle. Mix the 1x solution gently until the crystals have completely dissolved.
- SP Conjugate (100x):** Spin down the SP Conjugate briefly and dilute the desired amount of the conjugate 100-fold with MIX Diluent to produce a 1x solution. The undiluted conjugate should be stored at -20°C.

Assay Procedure

- Prepare all reagents, standard solutions, and samples as instructed. Bring all reagents to room temperature before use. The assay is performed at room temperature (20-25°C).
- Remove excess microplate strips from the plate frame and return them immediately to the foil pouch with desiccants inside. Reseal the pouch

securely to minimize exposure to water vapor and store in a vacuum desiccator.

- Add 50 μ l of Human Calprotectin Standard or sample to each well. Gently tap plate to thoroughly coat the wells. Break any bubbles that may have formed. Cover wells with a sealing tape and incubate for 2 hours. Start the timer after the last addition.
- Wash the microplate manually or automatically using a microplate washer. Invert the plate and decant the contents; hit 4-5 times on absorbent material to completely remove the liquid. If washing manually, wash five times with 200 μ l of Wash Buffer per well. Invert the plate each time and decant the contents; hit 4-5 times on absorbent material to completely remove the liquid. If using a microplate washer, wash six times with 300 μ l of Wash Buffer per well; invert the plate and hit 4-5 times on absorbent material to completely remove the liquid.
- Add 50 μ l of Biotinylated Human Calprotectin Antibody to each well. Gently tap plate to thoroughly coat the wells. Break any bubbles that may have formed. Cover wells with a sealing tape and incubate for 1 hour.
- Wash the microplate as described above.
- Add 50 μ l of SP Conjugate to each well. Gently tap plate to thoroughly coat the wells. Break any bubbles that may have formed. Cover wells with a sealing tape and incubate for 30 minutes. Turn on the microplate reader and set up the program in advance.
- Wash the microplate as described above.
- Add 50 μ l of Chromogen Substrate to each well. Gently tap plate to thoroughly coat the wells. Break any bubbles that may have formed. Incubate in ambient light for 30 minutes or until the optimal blue color density develops.
- Add 50 μ l of Stop Solution to each well. The color will change from blue to yellow. Gently tap plate to ensure thorough mixing. Break any bubbles that may have formed.
- Read the absorbance on a microplate reader at a wavelength of 450 nm **immediately**. If wavelength correction is available, subtract readings at 570 nm from those at 450 nm to correct optical imperfections. Otherwise, read the plate at 450 nm only. Please note that some unstable black particles may be generated at high concentration points after stopping the reaction for about 10 minutes, which will reduce the readings.

Data Analysis

- Calculate the mean value of the duplicate or triplicate readings for each standard and sample.
- To generate a standard curve, plot the graph using the standard concentrations on the x-axis and the corresponding mean 450 nm

absorbance (OD) on the y-axis. The best fit line can be determined by regression analysis using log-log or four-parameter logistic curve fit.

- Determine the unknown sample concentration from the Standard Curve and multiply the value by the dilution factor.

Typical Data

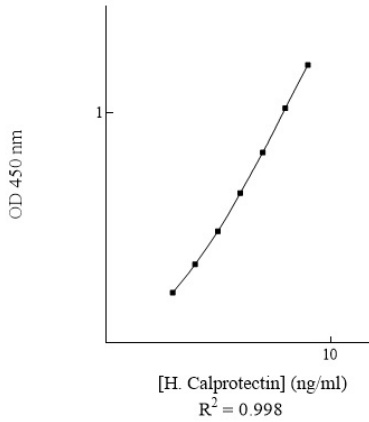
- The typical data is provided for reference only. Individual laboratory means may vary from the values listed. Variations between laboratories may be caused by technique differences.

Standard Point	ng/ml	OD	Average OD
P1	5.0	1.917 1.807	1.862
P2	2.5	1.072 1.046	1.059
P3	1.25	0.618 0.574	0.596
P4	0.625	0.345 0.357	0.351
P5	0.313	0.217 0.209	0.213
P6	0.156	0.132 0.146	0.139
P7	0.078	0.094 0.098	0.096
P8	0.0	0.065 0.059	0.062
Sample: Pooled Normal Sodium Citrate Plasma (2000x)		0.465 0.431	0.448
Sample: Pooled Normal Serum (2000x)		0.630 0.670	0.650

Standard Curve

- The curve is provided for illustration only. A standard curve should be generated each time the assay is performed.

Human Calprotectin Standard Curve



Reference Value

- Normal human calprotectin plasma and serum levels range from 1000 – 4000 ng/ml.
- Plasma and serum samples from healthy adults were tested (n=40). On average, human calprotectin level was 2270 ng/ml.

Sample	n	Average Value (ng/ml)
Pooled Normal Plasma	10	1778
Normal Plasma	20	2271
Pooled Normal Serum	10	2761

Performance Characteristics

- The minimum detectable dose of human calprotectin as calculated by 2SD from the mean of a zero standard was established to be 50 µg/ml.
- Intra-assay precision was determined by testing three plasma samples twenty times in one assay.
- Inter-assay precision was determined by testing three plasma samples in twenty assays.

	Intra-Assay Precision			Inter-Assay Precision		
Sample	1	2	3	1	2	3
n	20	20	20	20	20	20
CV (%)	5.9%	6.7%	4.5%	10.7%	11.0%	9.5%
Average CV (%)	5.7%			10.4%		

Recovery

Standard Added Value	0.313 – 2.5 ng/ml
Recovery %	89 – 109%
Average Recovery %	97%

Linearity

- Plasma and serum samples were serially diluted to test for linearity.

Average Percentage of Expected Value (%)		
Sample Dilution	Plasma	Serum
1000x	97%	92%
2000x	101%	101%
4000x	106%	108%

Cross-Reactivity

Species	Cross-Reactivity (%)
Canine	None
Bovine	None
Equine	None
Monkey	None
Mouse	None
Rat	None
Swine	None
Rabbit	None

- No significant cross-reactivity observed with CD9, elastase, lactoferrin, lysozyme, myeloperoxidase, S100A6, S100A10, S100A11, S100A14, S100A16, and S100B.
- 10% FBS in culture media will not affect the assay.

Troubleshooting

Issue	Causes	Course of Action
Low Precision	Use of improper components	<ul style="list-style-type: none"> • Check the expiration date listed before use. • Do not interchange components from different lots.
	Improper wash step	<ul style="list-style-type: none"> • Check that the correct wash buffer is being used. • Check that all wells are empty after aspiration. • Check that the microplate washer is dispensing properly. • If washing by pipette, check for proper pipetting technique.
	Splashing of reagents while loading wells	<ul style="list-style-type: none"> • Pipette properly in a controlled and careful manner.
	Inconsistent volumes loaded into wells	<ul style="list-style-type: none"> • Pipette properly in a controlled and careful manner. • Check pipette calibration. • Check pipette for proper performance.
	Insufficient mixing of reagent dilutions	<ul style="list-style-type: none"> • Thoroughly agitate the lyophilized components after reconstitution. • Thoroughly mix dilutions.
	Improperly sealed microplate	<ul style="list-style-type: none"> • Check the microplate pouch for proper sealing. • Check that the microplate pouch has no punctures. • Check that three desiccants are inside the microplate pouch prior to sealing.
Unexpectedly Low or High Signal Intensity	Microplate was left unattended between steps	<ul style="list-style-type: none"> • Each step of the procedure should be performed uninterrupted.
	Omission of step	<ul style="list-style-type: none"> • Consult the provided procedure for complete list of steps.
	Steps performed in incorrect order	<ul style="list-style-type: none"> • Consult the provided procedure for the correct order.
	Insufficient amount of reagents added to wells	<ul style="list-style-type: none"> • Check pipette calibration. • Check pipette for proper performance.
	Wash step was skipped	<ul style="list-style-type: none"> • Consult the provided procedure for all wash steps.
	Improper wash buffer	<ul style="list-style-type: none"> • Check that the correct wash buffer is being used.
	Improper reagent preparation	<ul style="list-style-type: none"> • Consult reagent preparation section for the correct dilutions of all reagents.
	Insufficient or prolonged incubation periods	<ul style="list-style-type: none"> • Consult the provided procedure for correct incubation time.
Deficient Standard Curve Fit	Non-optimal sample dilution	<ul style="list-style-type: none"> • Sandwich ELISA: If samples generate OD values higher than the highest standard point (P1), dilute samples further and repeat the assay. • Competitive ELISA: If samples generate OD values lower than the highest standard point (P1), dilute samples further and repeat the assay. • User should determine the optimal dilution factor for samples.
	Contamination of reagents	<ul style="list-style-type: none"> • A new tip must be used for each addition of different samples or reagents during the assay procedure.
	Contents of wells evaporate	<ul style="list-style-type: none"> • Verify that the sealing film is firmly in place before placing the assay in the incubator or at room temperature.
	Improper pipetting	<ul style="list-style-type: none"> • Pipette properly in a controlled and careful manner. • Check pipette calibration. • Check pipette for proper performance.

	Insufficient mixing of reagent dilutions	<ul style="list-style-type: none">• Thoroughly agitate the lyophilized components after reconstitution.• Thoroughly mix dilutions.
--	--	---

References

- (1) UniProt: P05109.
- (2) UniProt: P06702.

Version 1.6R