



AssayMax™
Human Ro52 Autoantibody ELISA
Kit
(anti-Ro52 IgG)

Assaypro LLC
3400 Harry S Truman Blvd
St. Charles, MO 63301
T (636) 447-9175
F (636) 395-7419
www.assaypro.com

For any questions regarding troubleshooting or performing the assay, please contact our support team at support@assaypro.com.

Thank you for choosing Assaypro.

Assay Summary

Step 1. Add 50 μ l of Standard or Sample per well.
Incubate 2 hours.

Step 2. Wash, then add 50 μ l of Biotinylated Antibody per well.
Incubate 1 hour.

Step 3. Wash, then add 50 μ l of SP Conjugate per well.
Incubate 30 minutes.

Step 4. Wash, then add 50 μ l of Chromogen Substrate per well.
Incubate 20 minutes.

Step 5. Add 50 μ l of Stop Solution per well.
Read at 450 nm immediately.

Symbol Key



Consult instructions for use.

AssayMax™ Human Ro52 Autoantibody ELISA Kit (anti-Ro52 IgG)

Catalog No. ER7501-1

Sample insert for reference use only

Introduction

Ro52, also called tripartite motif containing 21 (TRIM21) or Sjögren syndrome type A antigen (SS-A), is a member of the tripartite motif family. The 475-amino acid and 52-kDa protein is a ribonucleoprotein particle composed of a single polypeptide and one of four small RNA molecules. It has multiple N-terminal zinc finger motifs, a central leucine zipper, and a potential N-glycosylation site (1). Ro52 mediates the autoimmune diseases rheumatoid arthritis, systemic lupus erythematosus, Sjögren's syndrome, neonatal lupus syndrome with congenital heart block, and subacute cutaneous lupus (2). Autoantigen Ro52 is a RING-finger-type E3 ubiquitin ligase which functions by ubiquitination of target substrates (3). It plays roles in immune activation during pathogen infection and in the regulation of the cell cycle progression (4).

Principle of the Assay

The AssayMax™ Human Ro52 Autoantibody ELISA (Enzyme-Linked Immunosorbent Assay) Kit is designed for the quantitative determination of autoimmune response (IgG) to a target antigen (Ro52). The kit detects autoantibodies in human **plasma and serum samples**. This assay employs a quantitative **sandwich enzyme immunoassay technique that measures autoantibodies (anti-Ro52 IgG) in approximately 4 hours**. A Ro52 antigen has been pre-coated onto a 96-well microplate with removable strips. An autoantibody specific for Ro52 in standards and samples is sandwiched by the immobilized antigen and a biotinylated polyclonal antibody specific for human IgG, which is recognized by a streptavidin-peroxidase (SP) conjugate. All unbound material is washed away and a peroxidase enzyme substrate is added. The color development is stopped and the intensity of the color is measured.

Caution and Warning

- This product is for **Research Use Only** and is not intended for use in diagnostic procedures.
- Prepare all reagents (diluent buffer, wash buffer, standard, biotinylated antibody, and SP conjugate), as instructed, prior to running the assay.

- Prepare all samples prior to running the assay. The dilution factors for the samples are suggested in this insert. However, the user should determine the optimal dilution factor.
- Spin down the SP conjugate vial and the biotinylated antibody vial before opening and using contents.
- The Stop Solution is an acidic solution.
- The kit should not be used beyond the expiration date.

Reagents

- **Human Ro52 Autoantibody Microplate:** A 96-well polystyrene microplate (12 strips of 8 wells) coated with a Ro52 antigen.
- **Sealing Tapes:** Each kit contains 3 precut, pressure sensitive sealing tapes that can be cut to fit the format of the individual assay.
- **Human Ro52 Autoantibody Standard:** Plasma standard (8 AU, lyophilized).
- **Autoimmune Biotinylated Human IgG Antibody (50x):** A 50-fold concentrated biotinylated polyclonal antibody against human IgG (120 μ l).
- **EIA Diluent Concentrate (10x):** A 10-fold concentrated buffered protein base (30 ml).
- **Wash Buffer Concentrate (20x):** A 20-fold concentrated buffered surfactant (30 ml, 2 bottles).
- **SP Conjugate (100x):** A 100-fold concentrate (80 μ l).
- **Chromogen Substrate (1x):** A stabilized peroxidase chromogen substrate tetramethylbenzidine (7 ml).
- **Stop Solution (1x):** A 0.5 N hydrochloric acid solution to stop the chromogen substrate reaction (11 ml).

Storage Condition

- Upon arrival, immediately store components of the kit at recommended temperatures up to the expiration date.
- Store Microplate, SP Conjugate, and Biotinylated Antibody at -20°C.
- Store Diluent Concentrate (10x), Wash Buffer, Stop Solution, and Chromogen Substrate at 2-8°C.
- Unused microplate wells may be returned to the foil pouch with the desiccant packs and resealed for up to 30 days at -20°C.
- Store Standard at 2-8°C before reconstituting with Diluent and at -20°C after reconstituting with Diluent.

Other Supplies Required

- Microplate reader capable of measuring absorbance at 450 nm

- Pipettes (1-20 μl , 20-200 μl , 200-1000 μl , and multiple channel)
- Deionized or distilled reagent grade water

Sample Collection, Preparation, and Storage

- **Plasma:** Collect plasma using one-tenth volume of 0.1 M sodium citrate as an anticoagulant. Centrifuge samples at 3000 x g for 10 minutes and collect plasma. A 100-fold sample dilution is suggested into EIA Diluent; however, user should determine optimal dilution factor depending on application needs. The undiluted samples can be stored at -20°C or below for up to 3 months. Avoid repeated freeze-thaw cycles (EDTA or Heparin can also be used as an anticoagulant).
- **Serum:** Samples should be collected into a serum separator tube. After clot formation, centrifuge samples at 3000 x g for 10 minutes and remove serum. A 100-fold sample dilution is suggested into EIA Diluent; however, user should determine optimal dilution factor depending on application needs. The undiluted samples can be stored at -20°C or below for up to 3 months. Avoid repeated freeze-thaw cycles.

Refer to Dilution Guidelines for further instruction.

Guidelines for Dilutions of 100-fold or Greater <i>(for reference only; please follow the insert for specific dilution suggested)</i>	
100x	10000x
A) 4 μl sample : 396 μl buffer (100x) = 100-fold dilution <i>Assuming the needed volume is less than or equal to 400 μl.</i>	A) 4 μl sample : 396 μl buffer (100x) B) 4 μl of A : 396 μl buffer (100x) = 10000-fold dilution <i>Assuming the needed volume is less than or equal to 400 μl.</i>
1000x	100000x
A) 4 μl sample : 396 μl buffer (100x) B) 24 μl of A : 216 μl buffer (10x) = 1000-fold dilution <i>Assuming the needed volume is less than or equal to 240 μl.</i>	A) 4 μl sample : 396 μl buffer (100x) B) 4 μl of A : 396 μl buffer (100x) C) 24 μl of B : 216 μl buffer (10x) = 100000-fold dilution <i>Assuming the needed volume is less than or equal to 240 μl.</i>

Reagent Preparation

- Freshly dilute all reagents and bring all reagents to room temperature before use.
- **EIA Diluent Concentrate (10x):** Dilute the EIA Diluent Concentrate 10-fold with reagent grade water to produce a 1x solution. When diluting the concentrate, make sure to rinse the bottle thoroughly to extract any

precipitates left in the bottle. Mix the 1x solution gently until the crystals have completely dissolved. Store for up to 30 days at 2-8°C.

- **Human Ro52 Autoantibody Standard:** Reconstitute the Human Ro52 Autoantibody Standard (8 AU) with 1 ml of EIA Diluent to generate an 8 AU/ml standard stock solution. Allow the vial to sit for 10 minutes with gentle agitation prior to making dilutions. Prepare duplicate or triplicate standard points by serially diluting from the standard stock solution (8 AU/ml) 2-fold with equal volume of EIA Diluent to produce 4, 2, 1, 0.5, 0.25, and 0.125 AU/ml solutions. EIA Diluent serves as the zero standard (0 AU/ml). Aliquot remaining stock solution to limit repeated freeze-thaw cycles. This solution should be stored at -20°C and **used within 5 days**.

Standard Point	Dilution	[Ro52] (AU/ml)
P1	1 part Standard (8 AU/ml)	8.0
P2	1 part P1 + 1 part EIA Diluent	4.0
P3	1 part P2 + 1 part EIA Diluent	2.0
P4	1 part P3 + 1 part EIA Diluent	1.0
P5	1 part P4 + 1 part EIA Diluent	0.5
P6	1 part P5 + 1 part EIA Diluent	0.25
P7	1 part P6 + 1 part EIA Diluent	0.125
P8	EIA Diluent	0.0

- **Autoimmune Biotinylated Human IgG Antibody (50x):** Spin down the antibody briefly and dilute the desired amount of the antibody 50-fold with EIA Diluent to produce a 1x solution. The undiluted antibody should be stored at -20°C.
- **Wash Buffer Concentrate (20x):** Dilute the Wash Buffer Concentrate 20-fold with reagent grade water to produce a 1x solution. When diluting the concentrate, make sure to rinse the bottle thoroughly to extract any precipitates left in the bottle. Mix the 1x solution gently until the crystals have completely dissolved.
- **SP Conjugate (100x):** Spin down the SP Conjugate briefly and dilute the desired amount of the conjugate 100-fold with EIA Diluent to produce a 1x solution. The undiluted conjugate should be stored at -20°C.

Assay Procedure

- Prepare all reagents, standard solutions, and samples as instructed. Bring all reagents to room temperature before use. The assay is performed at room temperature (20-25°C).
- Remove excess microplate strips from the plate frame and return them immediately to the foil pouch with desiccants inside. Reseal the pouch

securely to minimize exposure to water vapor and store in a vacuum desiccator at -20°C.

- Add 50 µl of Human Ro52 Autoantibody Standard or sample to each well. Gently tap plate to thoroughly coat the wells. Break any bubbles that may have formed. Cover wells with a sealing tape and incubate for 2 hours. Start the timer after the last addition.
- Wash the microplate manually or automatically using a microplate washer. Invert the plate and decant the contents; hit 4-5 times on absorbent material to completely remove the liquid. If washing manually, wash five times with 200 µl of Wash Buffer per well. Invert the plate each time and decant the contents; hit 4-5 times on absorbent material to completely remove the liquid. If using a microplate washer, wash six times with 300 µl of Wash Buffer per well; invert the plate and hit 4-5 times on absorbent material to completely remove the liquid.
- Add 50 µl of Autoimmune Biotinylated Human IgG Antibody to each well. Gently tap plate to thoroughly coat the wells. Break any bubbles that may have formed. Cover wells with a sealing tape and incubate for 1 hour.
- Wash the microplate as described above.
- Add 50 µl of SP Conjugate to each well. Gently tap plate to thoroughly coat the wells. Break any bubbles that may have formed. Cover wells with a sealing tape and incubate for 30 minutes. Turn on the microplate reader and set up the program in advance.
- Wash the microplate as described above.
- Add 50 µl of Chromogen Substrate to each well. Gently tap plate to thoroughly coat the wells. Break any bubbles that may have formed. Incubate in ambient light for 20 minutes or until the optimal blue color density develops.
- Add 50 µl of Stop Solution to each well. The color will change from blue to yellow. Gently tap plate to ensure thorough mixing. Break any bubbles that may have formed.
- Read the absorbance on a microplate reader at a wavelength of 450 nm **immediately**. If wavelength correction is available, subtract readings at 570 nm from those at 450 nm to correct optical imperfections. Otherwise, read the plate at 450 nm only. Please note that some unstable black particles may be generated at high concentration points after stopping the reaction for about 10 minutes, which will reduce the readings.

Data Analysis

- Calculate the mean value of the duplicate or triplicate readings for each standard and sample.
- To generate a standard curve, plot the graph using the standard concentrations on the x-axis and the corresponding mean 450 nm

absorbance (OD) on the y-axis. The best fit line can be determined by regression analysis using log-log or four-parameter logistic curve fit.

- Determine the unknown sample concentration from the standard curve.
- Although normal samples have been diluted 100-fold, do not multiply the value by the dilution factor. Samples with elevated levels of autoantibodies can be further diluted; for example: 200x. Account for this further dilution factor when calculating the value of the sample.

Example	Dilution Factor	Multiplication Factor For Calculating Values
Serum with normal level of anti-Ro52 IgG	100x	1
Serum with elevated level of anti-Ro52 IgG	200x	2
Serum with elevated level of anti-Ro52 IgG	400x	4

Typical Data

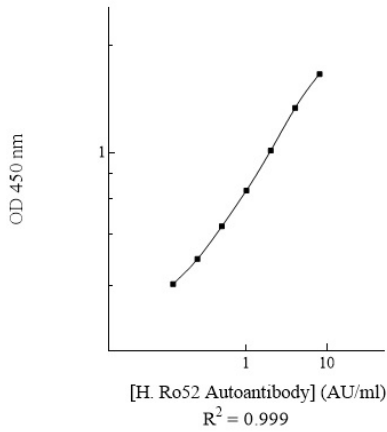
- The typical data is provided for reference only. Individual laboratory means may vary from the values listed. Variations between laboratories may be caused by technique differences.

Standard Point	AU/ml	Average OD
P1	8.0	2.120
P2	4.0	1.532
P3	2.0	1.020
P4	1.0	0.695
P5	0.5	0.494
P6	0.25	0.361
P7	0.125	0.284
P8	0.0	0.205
Normal Level Sample (100x): Serum with normal level of anti-Ro52 IgG		0.766
Elevated Level Sample (200x): Serum with elevated level of anti-Ro52 IgG		1.578

Standard Curve

- The curve is provided for illustration only. A standard curve should be generated each time the assay is performed.

Human Ro52 Autoantibody Standard Curve



Reference Value

- Plasma and serum samples from healthy adults were tested (n=20). Moreover, patient serum samples containing high levels of anti-Ro52 IgG were tested (n=9). The following ranges have been established:

Sample	anti-Ro52 IgG (AU/ml)
Normal Level	< 5
Elevated Level	≥ 5

- It is recommended that each laboratory establish its own normal and pathological ranges of antibodies.

Performance Characteristics

- The minimum detectable dose of anti-Ro52 IgG as calculated by 2SD from the mean of a zero standard was established to be 0.09 AU/ml.
- Intra-assay precision was determined by testing three serum samples twenty times in one assay.
- Inter-assay precision was determined by testing three serum samples in twenty assays.

	Intra-Assay Precision			Inter-Assay Precision		
Sample	1	2	3	1	2	3
n	20	20	20	20	20	20
CV (%)	3.2%	4.3%	3.6%	8.5%	10.4%	9.1%
Average CV (%)	3.7%			9.3%		

Troubleshooting

Issue	Causes	Course of Action
Low Precision	Use of improper components	<ul style="list-style-type: none"> Check the expiration date listed before use. Do not interchange components from different lots.
	Improper wash step	<ul style="list-style-type: none"> Check that the correct wash buffer is being used. Check that all wells are empty after aspiration. Check that the microplate washer is dispensing properly. If washing by pipette, check for proper pipetting technique.
	Splashing of reagents while loading wells	<ul style="list-style-type: none"> Pipette properly in a controlled and careful manner.
	Inconsistent volumes loaded into wells	<ul style="list-style-type: none"> Pipette properly in a controlled and careful manner. Check pipette calibration. Check pipette for proper performance.
	Insufficient mixing of reagent dilutions	<ul style="list-style-type: none"> Thoroughly agitate the lyophilized components after reconstitution. Thoroughly mix dilutions.
	Improperly sealed microplate	<ul style="list-style-type: none"> Check the microplate pouch for proper sealing. Check that the microplate pouch has no punctures. Check that three desiccants are inside the microplate pouch prior to sealing.
Unexpectedly Low or High Signal Intensity	Microplate was left unattended between steps	<ul style="list-style-type: none"> Each step of the procedure should be performed uninterrupted.
	Omission of step	<ul style="list-style-type: none"> Consult the provided procedure for complete list of steps.
	Steps performed in incorrect order	<ul style="list-style-type: none"> Consult the provided procedure for the correct order.
	Insufficient amount of reagents added to wells	<ul style="list-style-type: none"> Check pipette calibration. Check pipette for proper performance.
	Wash step was skipped	<ul style="list-style-type: none"> Consult the provided procedure for all wash steps.
	Improper wash buffer	<ul style="list-style-type: none"> Check that the correct wash buffer is being used.
	Improper reagent preparation	<ul style="list-style-type: none"> Consult reagent preparation section for the correct dilutions of all reagents.
Insufficient or prolonged incubation periods	<ul style="list-style-type: none"> Consult the provided procedure for correct incubation time. 	
Deficient Standard Curve Fit	Non-optimal sample dilution	<ul style="list-style-type: none"> Sandwich ELISA: If samples generate OD values higher than the highest standard point (P1), dilute samples further and repeat the assay. Competitive ELISA: If samples generate OD values lower than the highest standard point (P1), dilute samples further and repeat the assay. User should determine the optimal dilution factor for samples.

	Contamination of reagents	<ul style="list-style-type: none"> • A new tip must be used for each addition of different samples or reagents during the assay procedure.
	Contents of wells evaporate	<ul style="list-style-type: none"> • Verify that the sealing film is firmly in place before placing the assay in the incubator or at room temperature.
	Improper pipetting	<ul style="list-style-type: none"> • Pipette properly in a controlled and careful manner. • Check pipette calibration. • Check pipette for proper performance.
	Insufficient mixing of reagent dilutions	<ul style="list-style-type: none"> • Thoroughly agitate the lyophilized components after reconstitution. • Thoroughly mix dilutions.

References

- (1) Itoh K *et al.* (1991) *J Clin Invest.* 87(1):177-186.
- (2) Chan EK *et al.* (1991) *J Clin Invest.* 87(1):68-76.
- (3) Wada K, Kamitani T. (2006) *Biochem Biophys Res Commun.* 339(1):415-421.
- (4) Sabile A *et al.* (2006) *Mol Cell Biol.* 26(16):5994-6004.

Version 1.0