



**AssayLite™**  
**Monkey Albumin**  
**Fluorescent Immunoassay Kit**  
(Red Fluorescent Probe)

Assaypro LLC  
3400 Harry S Truman Blvd  
St. Charles, MO 63301  
T (636) 447-9175  
F (636) 395-7419  
[www.assaypro.com](http://www.assaypro.com)

***This product is manufactured under patented technology by  
Assaypro LLC***

**US Patent No. 9,945,847**

For any questions regarding troubleshooting or performing the assay, please contact our support team at [support@assaypro.com](mailto:support@assaypro.com).

Thank you for choosing Assaypro.



## Assay Summary

**Step 1.** Add 50  $\mu$ l of Standard/Sample and 50  $\mu$ l of Fluorescent Probe per well.

Incubate 45 minutes at 37°C.

**Step 2.** Wash, then add 50  $\mu$ l of Stabilizing Solution per well.

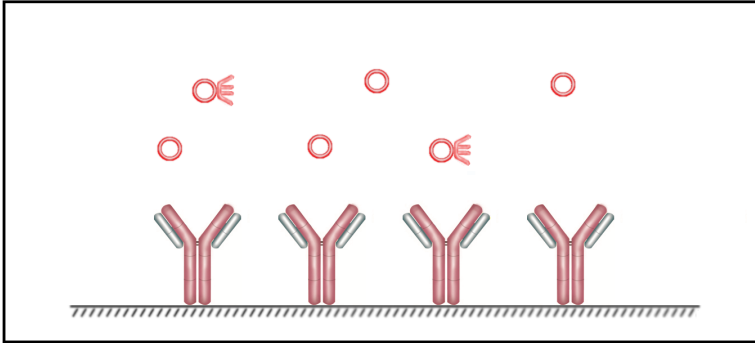
**Step 3.** Read at EX 485/20 nm, EM 575/15 nm.

## Symbol Key

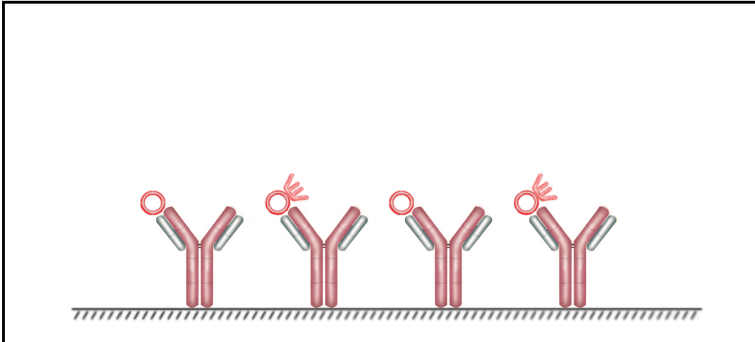


Consult instructions for use.

# Assay Mechanism



**Figure 1.** Standard, samples, and the fluorescent probe are added to wells and incubated. The fluorescent probe competes for binding sites with the standard and samples.



**Figure 2.** The microplate is washed and the endpoint fluorescence is measured. The fluorescence intensity is inversely proportional to the concentration of the Antigen A in the standard or samples.



# Assay Template

	1	2	3	4	5	6	7	8	9	10	11	12
A												
B												
C												
D												
E												
F												
G												
H												

# AssayLite™ Monkey Albumin Fluorescent Immunoassay Kit

Catalog No. FEKA2201

*Sample insert for reference use only*

## Introduction

Albumin, the main protein in plasma, is a globular unglycosylated serum protein with a molecular weight of 65 kDa that is synthesized by the liver. The prealbumin contains 609 amino acids and is processed to 585 amino acids in the mature protein (1). It comprises three homologous domains that assemble to form a heart-shaped molecule. Each domain is a product of two subdomains that possess common structural motifs (2). Albumin regulates blood oncotic pressure or colloidal osmotic pressure and transports hydrophobic molecules, such as lipids, hormones, and toxins. It is also an important circulating antioxidant and possesses enzymatic properties (3). Serum albumin level has been linked in clinical practice to several diseases. Low albumin levels can suggest liver disease, kidney disease, inflammation, shock, and malnutrition (4-6). On the other hand, high albumin levels usually reflect dehydration (7).

## Principle of the Assay

The AssayLite™ Monkey Albumin Fluorescent Immunoassay Kit employs a **quantitative competitive fluorescent probe technique** that measures albumin in monkey **plasma, serum, and urine samples** in approximately 45 minutes. A polyclonal antibody specific for monkey albumin has been pre-coated onto a 96-well opaque microplate with removable strips. Albumin in standards and samples is competed with a monkey albumin fluorescent probe. All unbound material is washed away before the endpoint fluorescence is measured.

## Caution and Warning

- This product is for **Research Use Only** and is not intended for use in diagnostic procedures.
- Prepare all reagents (diluent buffer, wash buffer, standard, and fluorescent probe), as instructed, prior to running the assay.
- Prepare all samples prior to running the assay. The dilution factors for the samples are suggested in this insert. However, the user should determine the optimal dilution factor.
- The kit should not be used beyond the expiration date.
- Avoid direct light exposure to the assay.

- Store fluorescent probe in a dark place. Do not freeze.

## Reagents

- **Monkey Albumin Microplate:** A 96-well opaque polystyrene microplate (12 strips of 8 wells) coated with a polyclonal antibody against monkey albumin.
- **Sealing Tapes:** Each kit contains 3 precut, pressure sensitive aluminum sealing tapes that can be cut to fit the format of the individual assay.
- **Monkey Albumin Standard:** Monkey albumin in a buffered protein base (120 µg, lyophilized).
- **Red Fluorescent Monkey Albumin Probe (20x):** Lyophilized.
- **MIX Diluent Concentrate (10x):** A 10-fold concentrated buffered protein base (30 ml).
- **Wash Buffer Concentrate (20x):** A 20-fold concentrated buffered surfactant (30 ml).
- **Stabilizing Solution (1x):** A solution to stabilize the fluorescent component (8 ml).

## Storage Condition

- Upon arrival, immediately store components of the kit at recommended temperatures up to the expiration date.
- Store Microplate, Diluent Concentrate (10x), Stabilizing Solution, and Wash Buffer at 2-8°C.
- Unused microplate wells may be returned to the foil pouch with the desiccants and resealed. May be stored for up to 30 days in a vacuum desiccator.
- Store Standard at 2-8°C before reconstituting with Diluent and at -20°C after reconstituting with Diluent.
- Store Fluorescent Probe in a dark place at 2-8°C. Do not freeze.

## Other Supplies Required

- Pipettes (1-20 µl, 20-200 µl, 200-1000 µl, and multiple channel)
- Deionized or distilled reagent grade water
- Incubator (37°C)
- Fluorescent Microplate Reader

## Sample Collection, Preparation, and Storage

- **Plasma:** Collect plasma using one-tenth volume of 0.1 M sodium citrate as an anticoagulant. Centrifuge samples at 3000 x g for 10 minutes and collect plasma. An 8000-fold sample dilution is suggested into MIX

Diluent; however, user should determine optimal dilution factor depending on application needs. The undiluted samples can be stored at -20°C or below for up to 3 months. Avoid repeated freeze-thaw cycles.

- **Serum:** Samples should be collected into a serum separator tube. After clot formation, centrifuge samples at 3000 x g for 10 minutes and remove serum. An 8000-fold sample dilution is suggested into MIX Diluent; however, user should determine optimal dilution factor depending on application needs. The undiluted samples can be stored at -20°C or below for up to 3 months. Avoid repeated freeze-thaw cycles.
- **Urine:** Collect urine using sample pot. Centrifuge samples at 800 x g for 10 minutes. The sample is suggested for use at 1x or within the range of 2x – 10x into MIX Diluent; however, user should determine optimal dilution factor depending on application needs. The undiluted samples can be stored at -20°C or below for up to 3 months. Avoid repeated freeze-thaw cycles.

*Applicable samples may also include biofluids, cell culture, and tissue homogenates. If necessary, user should determine optimal dilution factor depending on application needs.*

**Refer to Dilution Guidelines for further instruction.**

<b>Guidelines for Dilutions of 100-fold or Greater</b> <i>(for reference only; please follow the insert for specific dilution suggested)</i>	
<b>100x</b>	<b>10000x</b>
A) 4 µl sample : 396 µl buffer (100x) = 100-fold dilution  <i>Assuming the needed volume is less than or equal to 400 µl.</i>	A) 4 µl sample : 396 µl buffer (100x) B) 4 µl of A : 396 µl buffer (100x) = 10000-fold dilution  <i>Assuming the needed volume is less than or equal to 400 µl.</i>
<b>1000x</b>	<b>100000x</b>
A) 4 µl sample : 396 µl buffer (100x) B) 24 µl of A : 216 µl buffer (10x) = 1000-fold dilution  <i>Assuming the needed volume is less than or equal to 240 µl.</i>	A) 4 µl sample : 396 µl buffer (100x) B) 4 µl of A : 396 µl buffer (100x) C) 24 µl of B : 216 µl buffer (10x) = 100000-fold dilution  <i>Assuming the needed volume is less than or equal to 240 µl.</i>

## Reagent Preparation

- Freshly dilute all reagents and bring all reagents to room temperature before use.
- **MIX Diluent Concentrate (10x):** Dilute the MIX Diluent Concentrate 10-fold with reagent grade water to produce a 1x solution. When diluting the concentrate, make sure to rinse the bottle thoroughly to extract any

precipitates left in the bottle. Mix the 1x solution gently until the crystals have completely dissolved. Store for up to 30 days at 2-8°C.

- Monkey Albumin Standard:** Reconstitute the Monkey Albumin Standard (120 µg) with 1 ml of MIX Diluent to generate a 120 µg/ml standard stock solution. Allow the vial to sit for 10 minutes with gentle agitation prior to making dilutions. Prepare duplicate or triplicate standard points by serially diluting from the standard stock solution (120 µg/ml) 4-fold with MIX Diluent to produce 30, 7.5, 1.875, and 0.469 µg/ml solutions. MIX Diluent serves as the zero standard (0 µg/ml). Aliquot remaining stock solution to limit repeated freeze-thaw cycles. This solution should be stored at -20°C and **used within 5 days**.

Standard Point	Dilution	[Albumin] (µg/ml)
P1	1 part Standard (120 µg/ml)	120
P2	1 part P1 + 3 parts MIX Diluent	30
P3	1 part P2 + 3 parts MIX Diluent	7.5
P4	1 part P3 + 3 parts MIX Diluent	1.875
P5	1 part P4 + 3 parts MIX Diluent	0.469
P6	MIX Diluent	0

- Red Fluorescent Monkey Albumin Probe (20x):** Reconstitute the fluorescent probe with 1 ml of MIX Diluent to generate a stock solution. Allow the vial to sit for 10 minutes with gentle agitation prior to dilution. From the stock solution, dilute 20-fold with MIX Diluent to produce a 1x working solution. Any remaining stock solution should be stored in a dark place at 2-8°C and **used within 5 days**. Do not freeze.
- Wash Buffer Concentrate (20x):** Dilute the Wash Buffer Concentrate 20-fold with reagent grade water to produce a 1x solution. When diluting the concentrate, make sure to rinse the bottle thoroughly to extract any precipitates left in the bottle. Mix the 1x solution gently until the crystals have completely dissolved.

## Assay Procedure

- Prepare all reagents, standard solutions, and samples as instructed. Bring all reagents to room temperature before use. The assay is incubated at 37°C.
- Remove excess microplate strips from the plate frame and return them immediately to the foil pouch with desiccants inside. Reseal the pouch securely to minimize exposure to water vapor and store in a vacuum desiccator.
- Add 50 µl of Monkey Albumin Standard or sample to each well, and immediately add 50 µl of Red Fluorescent Monkey Albumin Probe to each

well (on top of the standard or sample). Gently tap plate to ensure thorough mixing. Break any bubbles that may have formed. Cover wells with a sealing tape and incubate for 45 minutes. Start the timer after the last addition.

- Wash the microplate manually or automatically using a microplate washer. Invert the plate and decant the contents; hit 4-5 times on absorbent material to completely remove the liquid. If washing manually, wash five times with 200  $\mu\text{l}$  of Wash Buffer per well. Invert the plate each time and decant the contents; hit 4-5 times on absorbent material to completely remove the liquid. If using a microplate washer, wash six times with 300  $\mu\text{l}$  of Wash Buffer per well; invert the plate and hit 4-5 times on absorbent material to completely remove the liquid.
- Immediately add 50  $\mu\text{l}$  of Stabilizing Solution to each well. Gently tap plate to thoroughly coat the wells. Break any bubbles that may have formed.
- Read the endpoint fluorescence on a microplate reader at an excitation wavelength of 485/20 nm and emission wavelength of 575/15 nm.
- For the Synergy H1F, a gain of 75 is suggested; however, the user should determine the optional gain/amplification.

## Data Analysis

- Calculate the mean value of the duplicate or triplicate readings for each standard and sample.
- To generate a standard curve, plot the graph using the standard concentrations on the x-axis and the corresponding mean emitted fluorescence on the y-axis. The best fit line can be determined by regression analysis using log-log or four-parameter logistic curve fit.
- Determine the unknown sample concentration from the Standard Curve and multiply the value by the dilution factor.

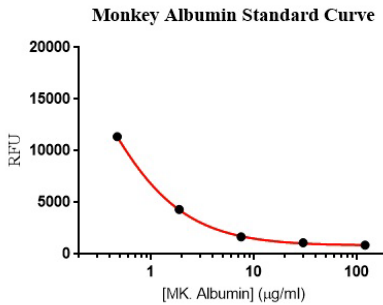
## Typical Data

- The typical data is provided for reference only. Individual laboratory means may vary from the values listed. Variations between laboratories may be caused by technique differences.

Reader	Standard Point	$\mu\text{g/ml}$	Monkey Albumin Average Red RFU
BioTek – Synergy H1F	P1	120	881
	P2	30	1108
	P3	7.5	1668
	P4	1.875	4318
	P5	0.469	11373
	P6	0	17021

## Standard Curve

- The curve is provided for illustration only. A standard curve should be generated each time the assay is performed.



Note: Standard curve reading with Biotek® Synergy H1F

## Reference Value

- Normal monkey albumin plasma and serum levels range from 31 – 52 mg/ml.

## Performance Characteristics

- The minimum detectable dose of monkey albumin as calculated by 2SD from the mean of a zero standard was established to be 0.31  $\mu\text{g/ml}$ .
- Intra-assay precision was determined by testing three plasma samples ten times in one assay.
- Inter-assay precision was determined by testing three plasma samples in ten assays.
- Intra-assay and inter-assay coefficients of variation were 6.3% and 10.1%, respectively.

## Spiking Recovery

- Recovery was determined by spiking one plasma sample with different monkey albumin concentrations.

Sample	Unspiked Sample (µg/ml)	Spiking Value (µg/ml)	Expected	Observed	Recovery (%)
Plasma	6.111	12.491	18.602	17.576	94%
		3.427	9.538	7.834	82%
		0.678	6.789	5.722	84%
<b>Average Recovery (%)</b>					<b>87%</b>

## Linearity

- A plasma sample was serially diluted to test for linearity.

<b>Average Percentage of Expected Value (%)</b>	
Sample Dilution	Plasma
4000x	86%
8000x	100%
16000x	117%

## Cross-Reactivity

Species	Cross-Reactivity (%)
Canine	None
Bovine	None
Equine	None
Human	< 2%
Mouse	None
Rat	None
Swine	None
Rabbit	None

## Troubleshooting

Issue	Causes	Course of Action
<b>Low Precision</b>	Use of improper components	<ul style="list-style-type: none"> <li>Check the expiration date listed before use.</li> <li>Do not interchange components from different lots.</li> </ul>
	Improper wash step	<ul style="list-style-type: none"> <li>Check that the correct wash buffer is being used.</li> <li>Check that all wells are empty after aspiration.</li> <li>Check that the microplate washer is dispensing properly.</li> <li>If washing by pipette, check for proper pipetting technique.</li> </ul>

	Splashing of reagents while loading wells	<ul style="list-style-type: none"> <li>• Pipette properly in a controlled and careful manner.</li> </ul>
	Inconsistent volumes loaded into wells	<ul style="list-style-type: none"> <li>• Pipette properly in a controlled and careful manner.</li> <li>• Check pipette calibration.</li> <li>• Check pipette for proper performance.</li> </ul>
	Insufficient mixing of reagent dilutions	<ul style="list-style-type: none"> <li>• Thoroughly agitate the Standard and Fluorescent Probe after reconstitution.</li> <li>• Thoroughly mix dilutions.</li> </ul>
	Improperly sealed microplate	<ul style="list-style-type: none"> <li>• Check the microplate pouch for proper sealing.</li> <li>• Check that the microplate pouch has no punctures.</li> <li>• Check that three desiccants are inside the microplate pouch prior to sealing.</li> </ul>
<b>Unexpectedly Low or High Signal Intensity</b>	Microplate was left unattended between steps	<ul style="list-style-type: none"> <li>• Each step of the procedure should be performed uninterrupted.</li> </ul>
	Omission of step	<ul style="list-style-type: none"> <li>• Consult the provided procedure for complete list of steps.</li> </ul>
	Steps performed in incorrect order	<ul style="list-style-type: none"> <li>• Consult the provided procedure for the correct order.</li> </ul>
	Insufficient amount of reagents added to wells	<ul style="list-style-type: none"> <li>• Check pipette calibration.</li> <li>• Check pipette for proper performance.</li> </ul>
	Wash step was skipped	<ul style="list-style-type: none"> <li>• Consult the provided procedure for all wash steps.</li> </ul>
	Improper wash buffer	<ul style="list-style-type: none"> <li>• Check that the correct wash buffer is being used.</li> </ul>
	Improper reagent preparation	<ul style="list-style-type: none"> <li>• Consult reagent preparation section for the correct dilutions of all reagents.</li> </ul>
	Insufficient or prolonged incubation periods	<ul style="list-style-type: none"> <li>• Consult the provided procedure for correct incubation time.</li> </ul>
	Prolonged exposure of assay or Fluorescent Probe to light	<ul style="list-style-type: none"> <li>• Overexposure can affect the stability of the Fluorescent Probe, store in a dark location.</li> <li>• Cover and cap all reagents when not in use.</li> <li>• Cover assay with aluminum sealing film immediately after loading.</li> </ul>
	Contamination of reagents	<ul style="list-style-type: none"> <li>• A new tip must be used for each addition of different samples or reagents during the assay procedure.</li> </ul>
	Contents of wells evaporated	<ul style="list-style-type: none"> <li>• Verify that the aluminum sealing film is firmly in place before placing the assay in the incubator.</li> </ul>
<b>Deficient Standard Curve Fit</b>	Used filters with an overlapping bandpass	<ul style="list-style-type: none"> <li>• As an example, do not use a filter combination of 620/20 EX and 660/40 EM, use a 660/20 filter instead.</li> </ul>
	Improper pipetting	<ul style="list-style-type: none"> <li>• Pipette properly in a controlled and careful manner.</li> <li>• Check pipette calibration.</li> <li>• Check pipette for proper performance.</li> </ul>
	Insufficient mixing of reagent dilutions	<ul style="list-style-type: none"> <li>• Thoroughly agitate the Standard and Fluorescent Probe after reconstitution.</li> <li>• Thoroughly mix dilutions.</li> </ul>

## References

- (1) Minghetti PP *et al.* (1986) *J Biol Chem.* 261(15):6747-6757.
- (2) He XM, Carter DC. (1992) *Nature.* 358(6383):209-215.
- (3) Minchiotti L *et al.* (2008) *Human Mutation.* 29(8):1007-1016.
- (4) Schindler C *et al.* (1999) *J Hepatol.* 31(6):1132.
- (5) Hemmeler MH *et al.* (1997) *Nephrol Dial Transplant.* 12 Suppl 2:57-62.
- (6) Wettstein R *et al.* (2004) *Shock.* 22(4):351-357.
- (7) Strand TA. (2004) *Am J Clin Nutr.* 79(3):451-456.

Version 1.0